



WORK AND ASSET MANAGEMENT, V2.1.1

5.7.1.5 WAM.v2.1.Manage Quantity and Price Adjustments

Creation Date: November 25, 2018

Last Updated: November 25, 2018

ORACLE®

Copyright © 2018, Oracle. All rights reserved.

This document is provided for information purposes only and the contents hereof are subject to change without notice. This document is not warranted to be error-free, nor subject to any other warranties or conditions, whether expressed orally or implied in law, including implied warranties and conditions of merchantability or fitness for a particular purpose. We specifically disclaim any liability with respect to this document and no contractual obligations are formed either directly or indirectly by this document. This document may not be reproduced or transmitted in any form or by any means, electronic or mechanical, for any purpose, without our prior written permission. Oracle, JD Edwards, PeopleSoft, and Siebel are registered trademarks of Oracle Corporation and/or its affiliates. Other names may be trademarks of their respective owners.

Contents

BRIEF DESCRIPTION	4
BUSINESS PROCESS MODEL PAGE 1.....	5
DETAIL BUSINESS PROCESS MODEL DESCRIPTION	6
TEST DOCUMENTATION RELATED TO THE CURRENT PROCESS	11
DOCUMENT CONTROL.....	12
APPENDIX	13
<i>Inventory Adjustment</i>	13
<i>Price Adjustment</i>	14
<i>Stock Item Details</i>	15

Brief Description

Business Process: 5.7.1.5 WAM.v2.1.Manage Quantity and Price Adjustments
Process Type: Sub-Process
Parent Process: 5.7.1 WAM.v2.1.Manage Inventory
Sibling Processes: 5.7.1.3 WAM.v2.1.Manage Physical Inventory, 5.6.5.2 WAM v2.1 Manage Tracked Assets

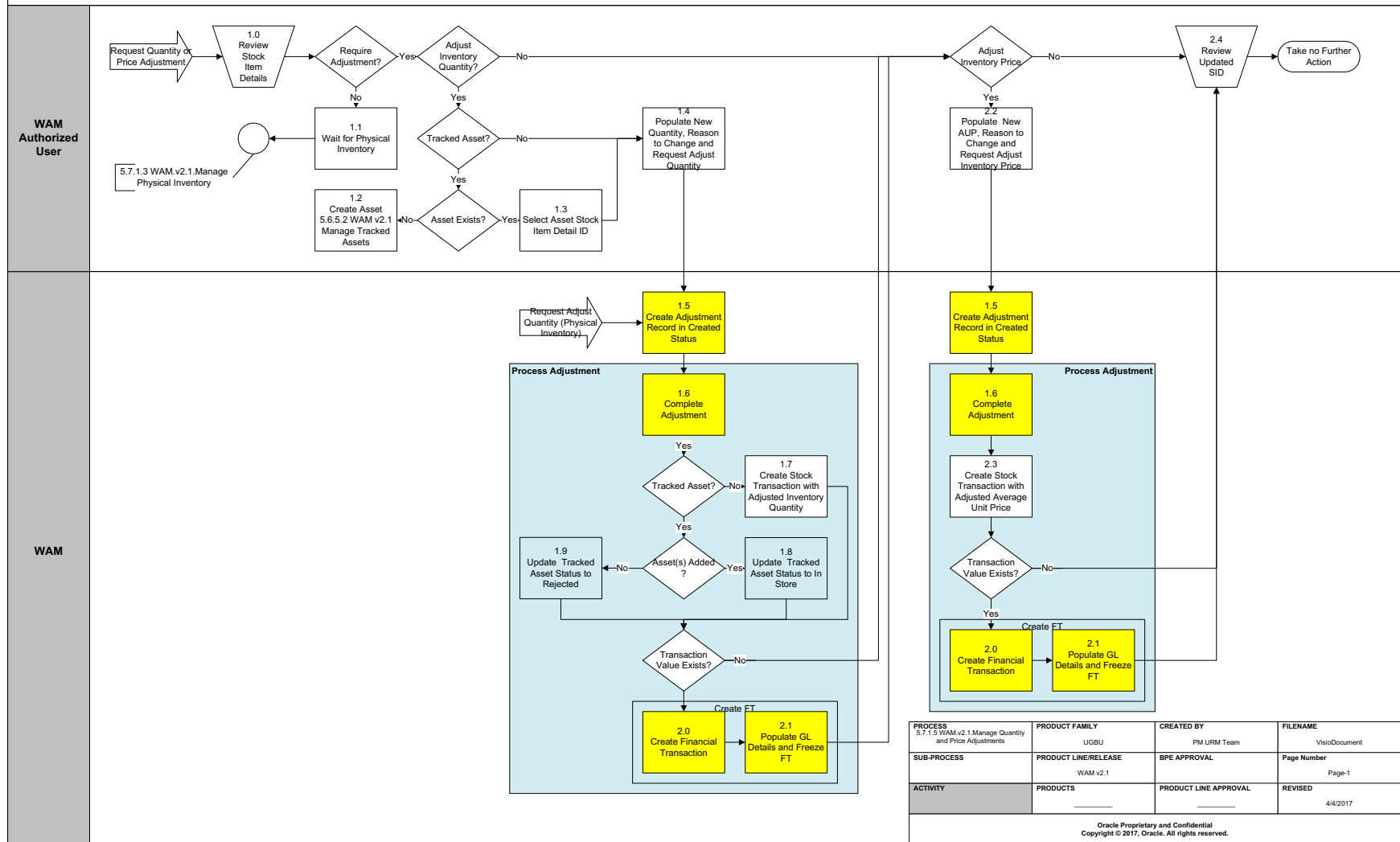
This process takes place when Stock Item quantity, Stock Item price, or both require update in application.

Quantity Adjustment occurs when WAM Authorized User finds discrepancy between on-hand quantity and physical available quantity and, as a result, changes the inventory items quantity.

Price Adjustment occurs when Stock Item price is changed and WAM Authorized User applies required change.

Business Process Model Page 1

5.7.1.5 WAM.v2.1.Manage Quantity and Price Adjustments



Detail Business Process Model Description

1.0 Review Stock Item Details

Actor/Role: WAM Authorized User

Description: WAM Authorized User evaluates Inventory details and Stock Item Details (SID) in order to determine if adjustments are required

Configuration required (Y/N)

Entities to Configure:

Storeroom Type, Storeroom
Inventory Management Master Configuration

1.1 Wait for Physical Inventory

Actor/Role: WAM Authorized User

Description: WAM Authorized User waits for physical inventory.

1.2 Create Asset 5.6.5.2 WAM v2.1 Manage Tracked Assets

Actor/Role: WAM Authorized User

Description: Asset is created in Application. Please refer to process **5.6.5.2 WAM v2.1 Manage Tracked Assets** for details.

1.3 Select Asset Stock Item Detail ID

Actor/Role: WAM Authorized User

Description: WAM Authorized User selects the asset's [Stock Item Detail ID](#) (SID) if there is a need to adjust tracked Asset's Inventory Quantity

1.4 Populate New Quantity, Reason to Change and Request Adjust Quantity

Actor/Role: WAM Authorized User

Description: WAM Authorized User [populates all the required information](#) and makes a request to adjust the stock item quantity.

1.5 Create Adjustment Record in Created Status

Actor/Role: WAM

Description: WAM creates Adjustment.

Process Plug-in enabled (Y/N)	Available Algorithm(s):	W1-IAINFO (Inventory Adjustment Information)
		W1-IAPRE (Inventory Adjustment Preprocessing)
		W1-IATRPRE (Inventory Adjustment Tracked Pre-Processing)
		W1-IADELALW (Inventory Adjustment Delete Allowed)
		W1-IAVAL (Inventory Adjustment Validation)
		F1-AT-RQJ (Transition to Default Next Status (Java))

Business Object (Y/N)	Business Object	W1-InventoryAdjustmentLM (Lot managed)
		W1-InventoryAdjustmentIT (Tracked Inventory)
		W1-InventoryAdjustmentRI (Regular Inventory)

Configuration required (Y/N)	Entities to Configure:	Inventory Management Master Configuration
-------------------------------------	-------------------------------	---

1.6 Complete Adjustment

Actor/Role: WAM

Description: WAM transitions the adjustment record to the completed status.

Process Plug-in enabled (Y/N)	Available Algorithm(s):	W1-ADJINV (Adjust Inventory)
--------------------------------------	--------------------------------	------------------------------

Business Object (Y/N)	Business Object	W1-InventoryAdjustmentLM (Lot managed)
		W1-InventoryAdjustmentIT (Tracked Inventory)
		W1-InventoryAdjustmentRI (Regular Inventory)

1.7 Create Stock Transaction with Adjusted Inventory Quantity

Actor/Role: WAM

Description: WAM creates Stock Transaction to adjust Inventory Quantity

Process Plug-in enabled (Y/N)	Available Algorithm(s):	W1-ADJINV (Adjust Inventory)
--------------------------------------	--------------------------------	------------------------------

W1-InventoryAdjustmentLM (Lot managed)
W1-InventoryAdjustmentIT (Tracked Inventory)

Business Object (Y/N)	Business Object	W1-InventoryAdjustmentRI (Regular Inventory)
		W1-StockTransaction

1.8 Update Tracked Asset Status to In Store

Actor/Role: WAM
Description: WAM updates the added tracked assets in inventory to “In Store” status.

Process Plug-in enabled (Y/N)	Available Algorithm(s):	W1-ADJINV (Adjust Inventory)
--------------------------------------	--------------------------------	------------------------------

Business Object (Y/N)	Business Object	W1-InventoryAdjustmentLM (Lot managed)
		W1-InventoryAdjustmentIT (Tracked Inventory)
		W1-InventoryAdjustmentRI (Regular Inventory)
		W1-TrackedGeneralAsset

1.9 Update Tracked Asset Status to Rejected

Actor/Role: WAM
Description: WAM updated the asset status to “Rejected”.

Process Plug-in enabled (Y/N)	Available Algorithm(s):	W1-ADJINV (Adjust Inventory)
--------------------------------------	--------------------------------	------------------------------

Business Object (Y/N)	Business Object	W1-InventoryAdjustmentLM (Lot managed)
		W1-InventoryAdjustmentIT (Tracked Inventory)
		W1-InventoryAdjustmentRI (Regular Inventory)
		W1-TrackedGeneralAsset

2.0 Create Financial Transaction

Actor/Role: WAM
Description: WAM creates Financial Transaction.

Process Plug-in enabled (Y/N)	Available Algorithm(s):	W1-ADJINV (Adjust Inventory)
		W1-FTAUDIT (Financial Transaction Audit)
		W1-FTVALID (Financial Transaction Validation)
		W1-UPDSIBCAN (Update Sibling Cancelled Indicator)

Business Object (Y/N)	Business Object	W1-InventoryAdjustmentLM (Lot managed)
		W1-InventoryAdjustmentIT (Tracked Inventory)
		W1-InventoryAdjustmentRI (Regular Inventory)
		W1-FinancialTransaction

Configuration required (Y/N)	Entities to Configure:	Financial Master Configuration
-------------------------------------	-------------------------------	--------------------------------

2.1 Populate GL Details and Freeze FT

Actor/Role: WAM

Description: WAM updates GL details and transits Financial Transaction to the “Frozen” state.

Process Plug-in enabled (Y/N)	Available Algorithm(s):	W1-VALGLCCEX (Validate Cost Center and Expense Code)
		W1-UPDDETPRC (Update GL Details and Processes)

Business Object (Y/N)	Business Object	W1-InventoryAdjustmentLM (Lot managed)
		W1-InventoryAdjustmentIT (Tracked Inventory)
		W1-InventoryAdjustmentRI (Regular Inventory)
		W1-FinancialTransaction

Configuration required (Y/N)	Entities to Configure:	Financial Master Configuration, Distribution Codes
-------------------------------------	-------------------------------	--

2.2 Populate New AUP, Reason to Change and Request Adjust Inventory Price

Actor/Role: WAM Authorized User

Description: WAM Authorized User [populates details](#) and makes a request to adjust the stock item price.

2.3 Create Stock Transaction with Adjusted Average Unit Price

Actor/Role: WAM

Description: WAM updates the inventory Average Unit Price(AUP).

Process Plug-in enabled (Y/N) **Available Algorithm(s):**

W1-ADJINV (Adjust Inventory)

Business Object (Y/N) **Business Object**

W1-InventoryAdjustmentLM (Lot managed)
W1-InventoryAdjustmentIT (Tracked Inventory)
W1-InventoryAdjustmentRI (Regular Inventory)
W1-StockTransaction

2.4 Review Updated SID

Actor/Role: WAM Authorized User

Description: WAM Authorized User reviews updated stock item details.

Test Documentation related to the Current Process

ID	Document Name	Test Type

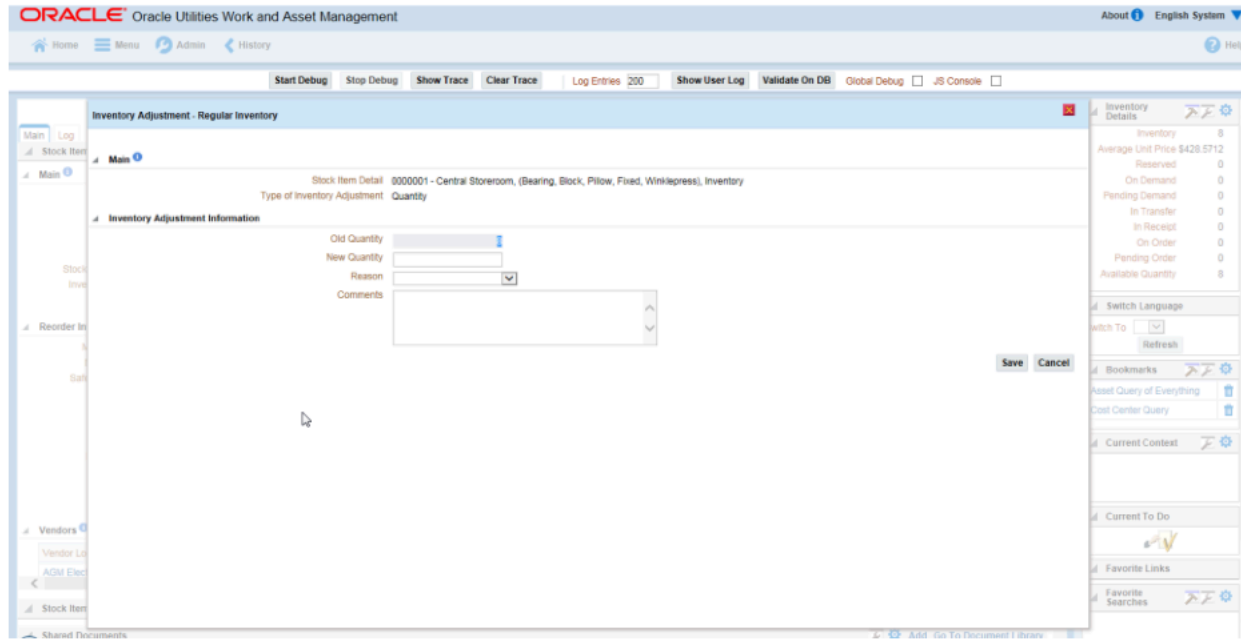
Document Control

Change Record

Date	Author	Version	Change Reference
02/25/2017	Mike Aksmanovic	1	Initial Version
11/14/2018	Kimberley Herrala Scott		Reviewed
11/14/2018	Galina Polonsky		Reviewed, Approved

Appendix

Inventory Adjustment



Price Adjustment

The screenshot displays the Oracle Utilities Work and Asset Management (WAM) interface. The main window is titled "Inventory Adjustment - Regular Inventory". The interface includes a top navigation bar with "ORACLE Oracle Utilities Work and Asset Management" and "About English System". Below this is a menu bar with options like "Home", "Menu", "Admin", and "History". A toolbar contains buttons for "Start Debug", "Stop Debug", "Show Trace", "Clear Trace", "Log Entries 200", "Show User Log", "Validate On DB", "Global Debug", and "JS Console".

The main content area is divided into several sections:


- Main:** Contains "Stock Item Detail" (8000001 - Central Storeroom, (Bearing, Block, Pillow, Fixed, Winkypress), Inventory) and "Type of Inventory Adjustment" (Price).
- Inventory Adjustment Information:** A form with the following fields:
 - Old Average Unit Price: 428.57
 - New Average Unit Price: (empty text box)
 - Reason: (dropdown menu)
 - Comments: (text area)

At the bottom right of the form are "Save" and "Cancel" buttons. On the right side of the interface, there is a sidebar with various utility panels: "Inventory Details" (showing metrics like Inventory, Average Unit Price, Reserved, etc.), "Switch Language", "Bookmarks", "Current Context", "Current To Do", "Favorite Links", and "Favorite Searches".

Stock Item Details

Inventory Stock Item Detail

Main i

Stock Item GP090909 (URM test)
Storeroom Central Storeroom
Inventory Cost Center 
Buyer

Access Control

Purchase Details i

Unit of Purchase *
Purchase to Issue Ratio
Tax Rate Schedule



Reorder Information i

Maximum Quantity
Minimum Quantity
Safety Stock Quantity
Reorder Point
Reorder Quantity
Auto Reorder
ABC Class
Lead Time (Days)
Source Code
Activity Indicator




▲ Pricing

Markup Indicator ▼
Markup Rate

▲ Bin

	Bin	Bin Type
  *	<input type="text" value=""/>	* <input type="text" value=""/> ▼

▲ Vendors

	Vendor Location	Vendor Part Number	Vendor Priority
  *	<input type="text" value=""/> 	<input type="text" value=""/>	<input type="text" value=""/> ▼